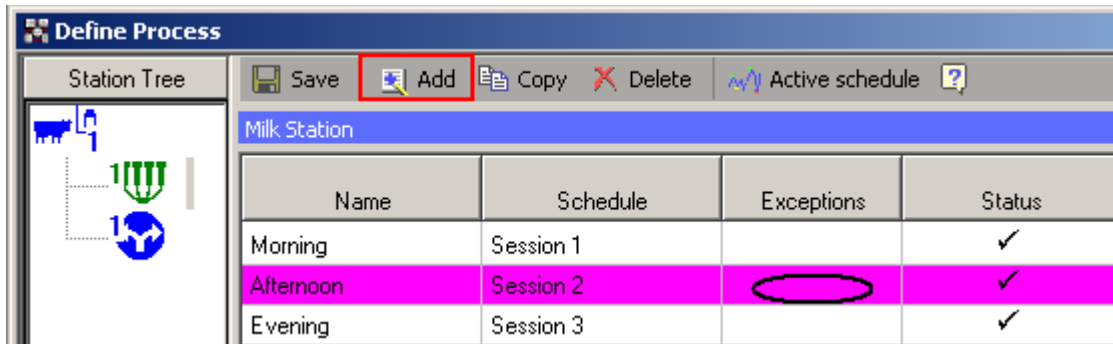


For Farms Milking Some Cows 3 Times a Day and Others 2 Times

Doing all the following steps will result in not having the Station report display the cows that are not milked in Session 2 as unidentified cows.

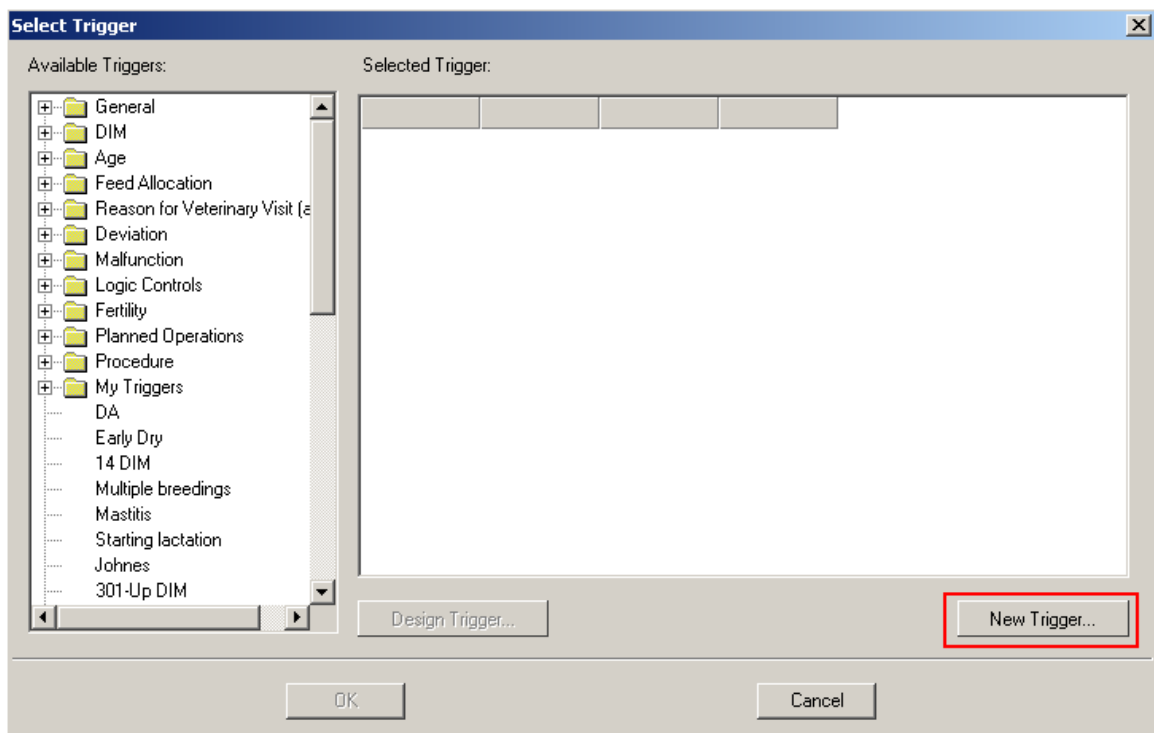
Go to **Stations>Define Process**

Click **Add**, and create 3 processes – one for each Session



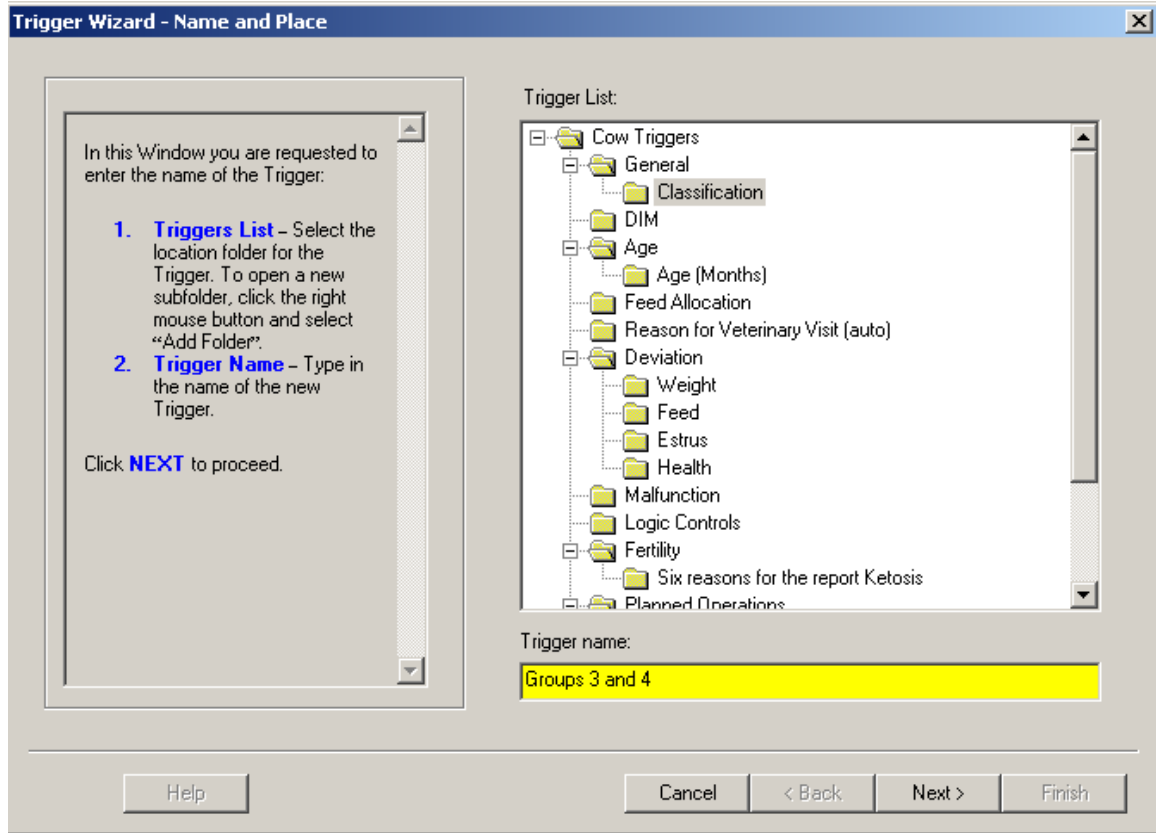
Double Click in the **Exceptions** cell for the Session NOT all the groups are milked.

(A single click will bring up a list of Triggers) Double Click will open this window:



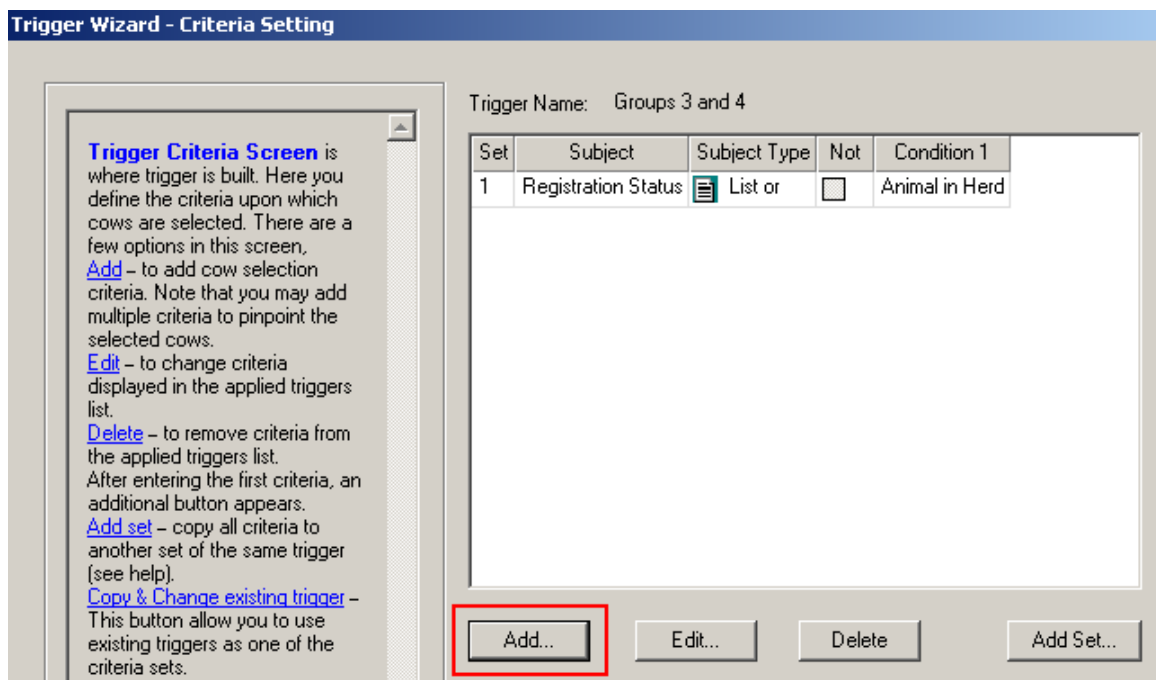
Click **New Trigger**

Type a Trigger name in the **yellow** field

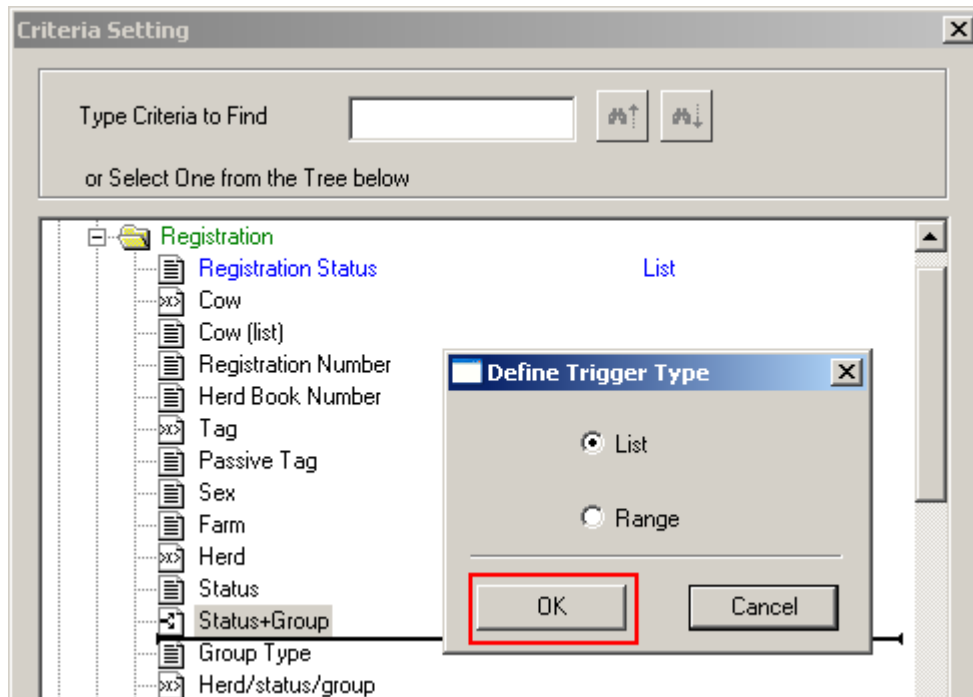


Next

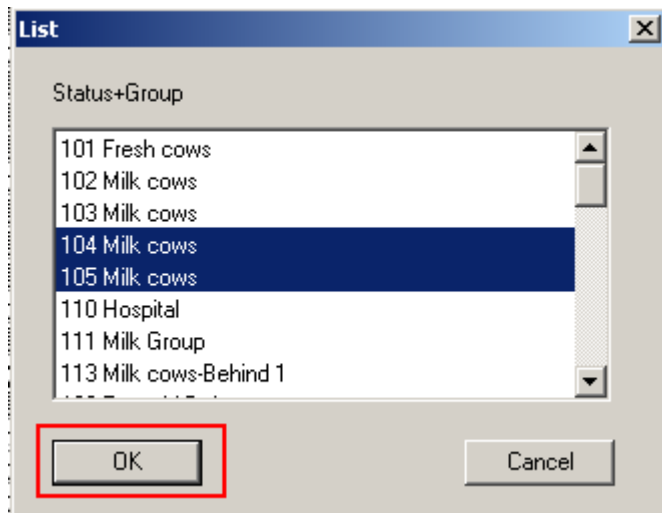
In the Criteria Setting screen, click **Add**



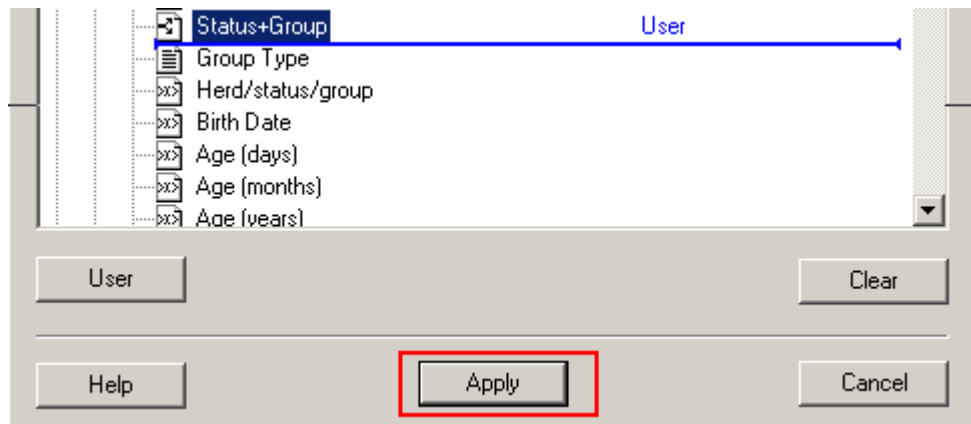
In the Registration Folder, click **Status+Group**
A small window opens, click **OK**



Highlight the groups milked 2 times a day.
Click **OK**



Click **Apply**



Click **Finish**

Click **OK** in the last window

In the Define Process window, click **Save**

