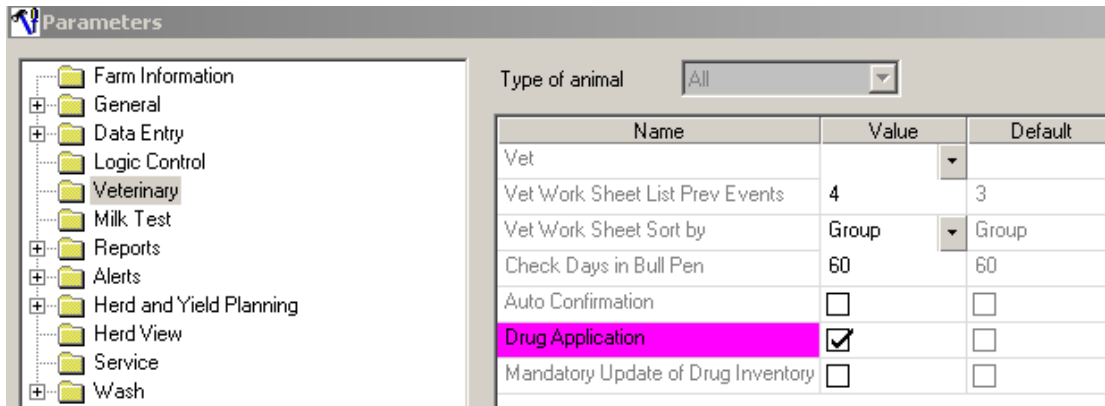


How to use the Withhold Milk function in AfiFarm

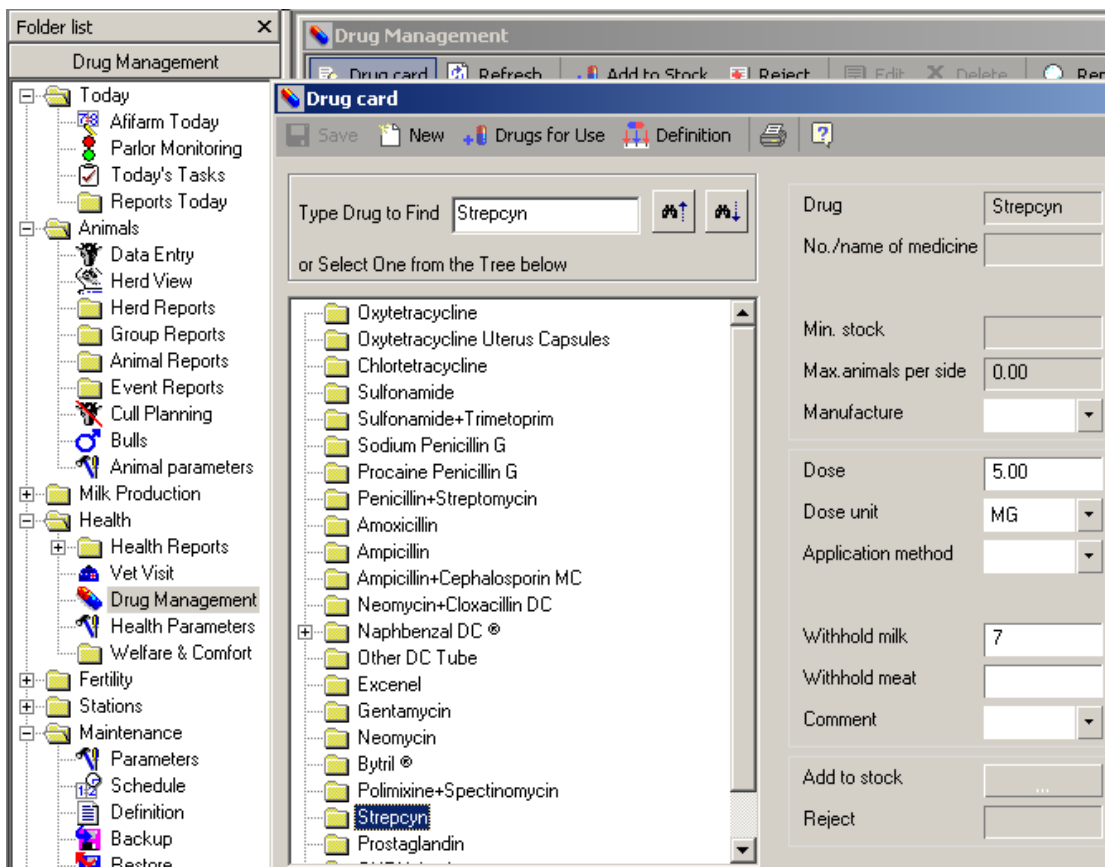
It enables you to use one parlor code for various drugs having different withholding periods

If you want the **Withhold Milk** function to work for Drugs, in **Parameters>Veterinary**, check **Drug Application**.

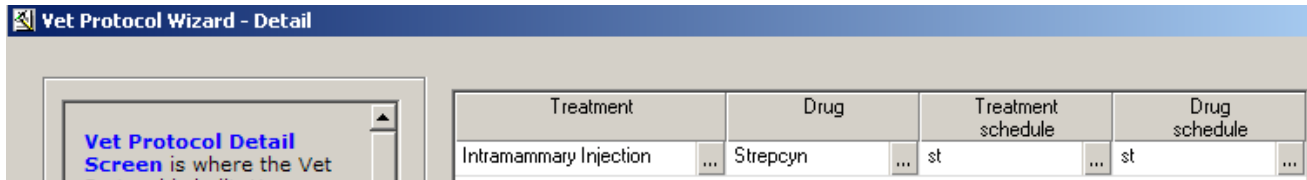


In the **Health** Folder, go to **Drug Management**, open the **Drug Card** and enter withhold milk days for the drug – Remember that it is days from the last treatment.

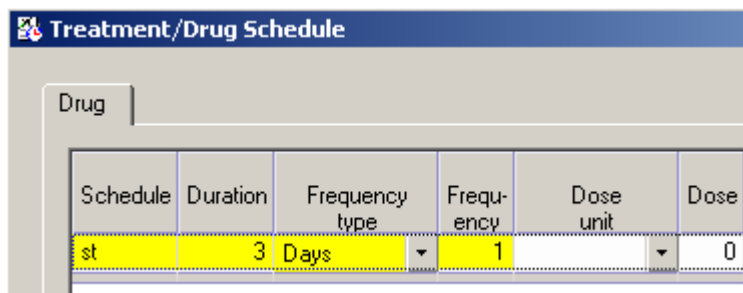
Example: 7 days, if the cow gets the drug 3 times the program will set the true withholding period at 10 days.



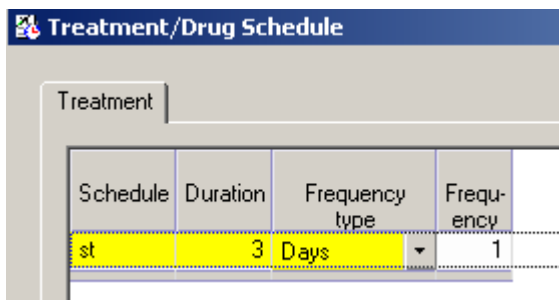
Build a **Vet Protocol**



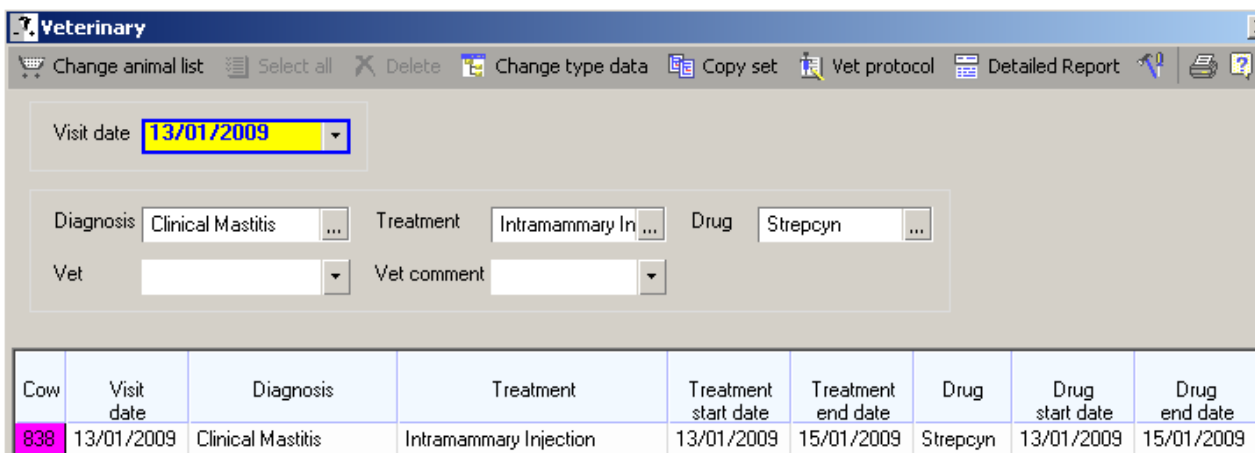
Treatment – Duration = 3 days



Drug – Duration = 3 days



Apply the Protocol to a cow. In Data Entry, click on the **Veterinary** folder. Click **Add** to select the cow.



At the end of each day you will need to confirm events in **Today's Tasks**

Index	Date	Cow	Grp.	Confirmation	Event	Event Info
1	13/01/2009	838	1	<input checked="" type="checkbox"/>	Intramammary Injection	Treatment
2	13/01/2009	838	1	<input checked="" type="checkbox"/>	Strepcyn	Drugs

Now for the Code

Code 7 = Withhold Milk

This Code will work not only for Strepcyn (our example) with 7 days, but for all drugs that have withhold milk days in the Drug Card – 3 days, 10 days.....

Code Wizard - Name

Welcome to the code wizard.
 In the first screen you are requested to fill in two text fields
Code – Type in one or two alphanumeric digits of the code.
 Please note that the folder list above contains all the existing codes. To create a new code, select one or two digit combination that does not exist in the list.
 If you want the system to select the code digits for you, click the **GENERATE CODE** button. This will place the next available code in the code text box.
Description – Here you should type the meaning of the code. This will help you remember the purpose of each code.
 Click **HELP** for further explanations about codes, or click **FINISH** to save the code. To create a conditional code click **NEXT**.

Folder list:

- Code
- J Code J
- 8 Colostrum
- 1 סומטים להפריד חלב רבע
- 5 Dry Cow
- 7 אנטיוביוטיקה
- 6 דם בחלב
- 2 סומטים להפריד חלב רבע
- 3 סומטים להפריד חלב רבע
- 4 סומטים להפריד חלב רבע

Code:

Description:

Type of Additional information:

Click **Next**

Select the **Withhold Milk/Meat** Trigger

Code Wizard - Cow Trigger

This is an optional screen that allows you to assign a trigger to the code.
To assign a trigger to code

- Ensure that the **DISABLE TRIGGER** box is unchecked.
- Select the trigger in the trigger list above.
- Click **NEXT**.

If the set of conditions for the code does not exist in the trigger list, you may create a new trigger by clicking the **NEW TRIGGER** button.

Trigger List:

- Exit (all)
- Animals never in Farm
- העתק של חולבות + יבשות + עגלות
- Milk Test
- Bull Group
- Withhold Milk/Meat
- שדומ/חלבון חולבות
- Classification
- DIM

Set	Subject	Subject Type	Not	Condition 1
1	Registration Status	List or	<input type="checkbox"/>	Animal in Herd
1	Withhold Milk	Range	<input type="checkbox"/>	1 - 9999
1	Withhold Meat	Range	<input type="checkbox"/>	1 - 9999

Code Lifetime

Code Wizard - Lifetime

This is another optional screen. In this screen you may define the life span of the code so it is automatically removed when its life span expires. The "Lifetime" screen enables four options:

- Immortally** – This is the default option defining that a code assigned needs to be removed manually.
- From entry date in sessions** – to define a number of milking sessions to the expiration of the code.
- From entry date in days** – to define a number of days to the expiration of the code.
- Between calendar dates** – to set the code to activation between calendar dates.

Immortality
 From code entry date - in sessions
 From code entry date - in days
 Between Calendar Dates

From

To

Here we see the cow in a report, she has Code 7 (after the 1st confirmation in **Today's Tasks**)

Milk Cows (13/01/2009 06:48:06)												
Save Save As... Design Refresh												
Index	Cow	Tag	Grp.	Gyn. status	Daily Yield			Lact. no.	DIM	Insemination		Code
					Today	Avg.	%			No.	Days After	
26	838	26	1	Insemination	41.5	40.9	1	2	162	5	9	Z

In the **Withhold Milk/Meat** report (**Health Reports** Folder)
 9 more days of withholding milk – Code 7 will be displayed in the parlor for 9 more days.
 Make sure the Code is defined as a High Priority Code and perhaps apply the “Lock Start
 Button” option for this Code.

Withhold Milk/Meat (13/01/2009 06:48:56)									
Save Save As... Design Refresh ?									
Index	Cow	Grp.	Status	DIM	Number		Withhold milk	Withhold meat	
					Lact.	Insem.			
1	838	1	Milk	162	2	5	9		2
Avg.	--	--		-- 162	--	5	--		--